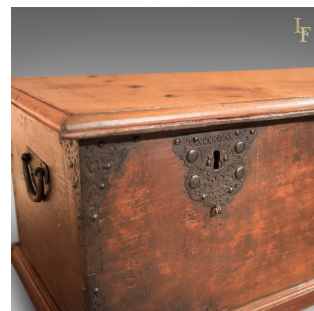


Antique Chest, Colonial Hardwood Trunk, Early C19th



DESCRIPTION

Our Stock # R0680 This is an antique, colonial hardwood chest dating to the early 19th century. Raised on a plinth base, this large and heavy trunk is made from dense and solid hardwood boards with attractive graining and patina; part of the lid moulding retaining hints of the original tangerine paint. Decorated with pierced iron mounts, the corner brackets further strengthen the thick dovetail construction, elaborate lock escutcheons embellish the front, sturdy forged handles adorn the ends and naive studs pin the lid to the strap hinges within. Lifting the lid reveals voluminous storage and a pair of candle boxes, one at either end. Ideal as a hall bench or coffee table, delivered waxed, polished and ready for the home.

Search [London Fine for #R0680](#) , or scan the QR code for more photos and details

DIMENSIONS

Max Width: 145cm (57")
Max Depth: 61cm (24")
Max Height: 49cm (19.25")

