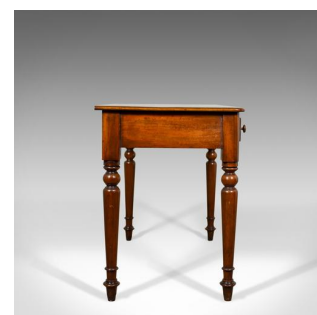


Antique Side Table, English, Mahogany, 19th Century, Circa 1860



DESCRIPTION

Our Stock # 11.3492

This is an antique side table, an English piece in mahogany dating to the mid 19th century circa 1860.

- A super piece with elegant lines and in good proportion
- Warm honey hues in wax polished finish of the mahogany
- Pleasingly patinated, the top displays well with moulded edge detail
- Rounded corners to the front and lipped at the back for close wall placement
- A pair of frieze drawers dressed with turned pulls
- Featuring hand cut dovetail joints and mahogany linings
- Raised on turned and tapered legs
- Of quality craftsmanship

An attractive piece ideal for the drawing room or hall. Solid joints and construction, delivered waxed, polished and ready for the home.

Search [London Fine for #11.3492](#) , or scan the QR code for more photos and details

DIMENSIONS

Max Width: 100cm (39.25")

Max Depth: 53.5cm (21")

Max Height: 69cm (27.25")

