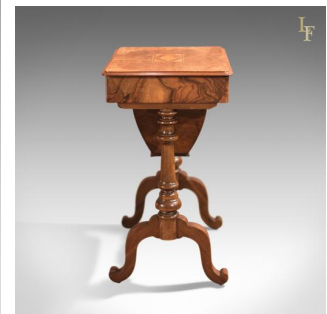


## Antique Work Table, Victorian Sewing Table c1860



### DESCRIPTION

Our Stock # 10.1451

This is an antique, Victorian work table dating to c.1860.

The striking grain detail of the burr walnut top and, unusually, to the frieze is a true delight on this mid 19th century work table.

The top, with moulded edge detail, is inlaid with a central conch motif framed within a geometric border featuring boxwood, birch and ebony. A further fine, inlaid boxwood string detail to the perimeter finishing it nicely.

The frieze drawer benefits from a divided, baize lined interior and closes with the original working lock and key.

Beneath, a walnut sliding trumpet draws to reveal voluminous, useful storage space still lined with paper.

Raised on plain cabriole legs united by a turned stretcher, the work station is raised on tapering, ring turned column supports.

An attractive period work table with solid joints and construction, delivered waxed, polished and ready for the home.

Search [London Fine for #10.1451](#) , or scan the QR code for more photos and details

### DIMENSIONS

Max Width: 53cm (20.75")

Max Depth: 41cm (16.25")

Max Height: 73.5cm (29")

