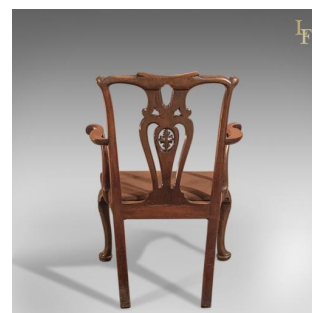
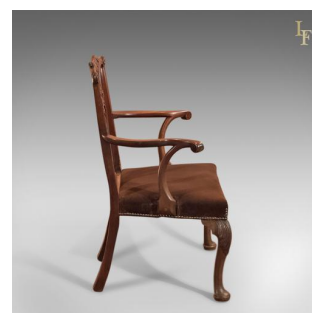
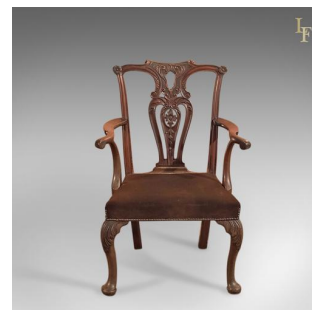


Antique Elbow Chair, 19th Century in Chippendale Taste



DESCRIPTION

Our Stock # 13.0674

This is a 19th century, antique elbow chair in the Chippendale taste.

Raised on swept square section rear legs with chamfered inner corners and cabriole front legs featuring acanthus leaf carved knees and terminating in early 18th century style pad feet, this chair is sturdy and stable offering a comfortable seat.

The out-turned, sinuous arm rests finish in a modest scroll detail and ride upon curved supports above the traditionally upholstered 'stuff-over' brown velvet seat trimmed with brass studs; showing signs of appropriate age and something that could be recovered to suit any decor.

The pierced and carved back displays foliate and scroll detail in the vase shaped splat rising from half shoe and capped with a serpentine crest rail flanked with rosettes at the ear.

An attractive mahogany chair with desirable aged patina, solid joints and construction, delivered waxed, polished and ready for the home.

Search [London Fine for #13.0674](#) , or scan the QR code for more photos and details

DIMENSIONS

Max Width: 67cm (26.25")

Max Depth: 54cm (21.25")

Max Height: 94cm (37")

Seat Width: 45cm (17.75")

Seat Depth: 41cm (16")

Seat Height: 42cm (16.5")

LIST PRICE

£795.00

