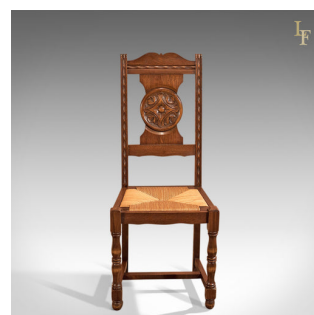


## Edwardian Set of 6 Antique Dining Chairs, c.1910



### DESCRIPTION

Our Stock # LFA-1430 This is a set of six antique dining chairs dating to the Edwardian period c.1910. Raised on turned front legs and square section rear, united by an 'H' stretcher, this set of chairs display good colour and an aged patina in the English oak construction. The raked seat backs centre around a large, carved, stylised rosette in the splat beneath a shaped crest rail. Both the stiles and crest rail delineated and highlighted with bands of carving. The rush seats are in very good order and contrast nicely with the frames – a blend of golden hues and deep warm browns. Solid and very practical this set of chairs have solid joints and are delivered waxed, polished and ready for the home.

Search [London Fine](#) for #LFA-1430 or scan the QR code for more photos and details

### DIMENSIONS

Max Width: 45cm (17.75")  
 Max Depth: 46cm (18")  
 Max Height: 105cm (41.25")  
 Seat Width: 37cm (14.5")  
 Seat Depth: 36cm (14.25")  
 Seat Height: 45cm (17.75")

