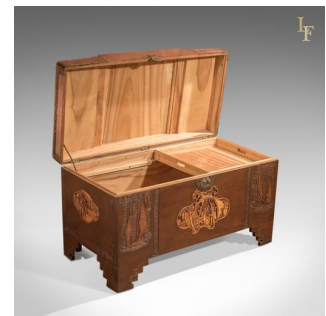


## Antique Chest, Oriental Camphor Wood Trunk, 1930s



### DESCRIPTION

Our Stock # LFA-1422 This is an early 20th century camphor wood trunk dating to c.1930. In a dark polished finish, this chest is raised on stepped bracket feet delineated with geometric tracery, typically found on oriental storage furniture of this type. Each face of the trunk features a different, wonderfully deep relief, carved cartouche depicting oriental scenes in a contrasting finish to the body of the chest. Further, more subtle, carvings of fishing boats flank the centrepieces separated by ribbons of reciprocating stylised rosettes and geometric bands. The stepped lid is closed with an etched brass clasp and lifts to reveal the voluminous space inside topped with a sliding, removable tray — ideal for smaller items. A fine example well made, solid joints and construction, delivered waxed, polished and ready for the home.

Search [London Fine](#) for #LFA-1422 or scan the QR code for more photos and details

### DIMENSIONS

Max Width: 100cm (39.25")

Max Depth: 50cm (19.75")

Max Height: 61cm (24")

