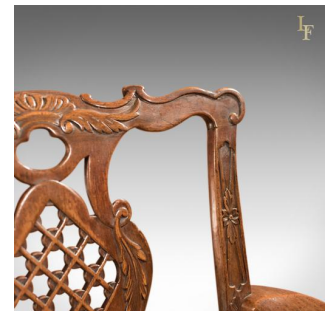
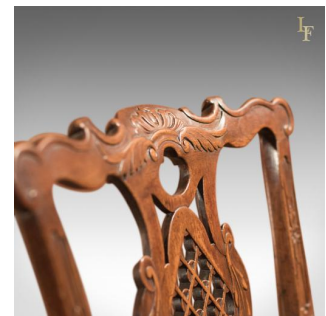


## George III Elbow Chair, in the manner of Robert Manwaring



### DESCRIPTION

Our Stock # LFA-1391 This is an antique, elbow chair with a Chinese lattice back splat, after the designs of Robert Manwaring dating to the mid 18th century, c.1760. With all the hallmarks of Manwaring's designs this is a fine example from the period. Raised on square section front legs and swept rear, united by a stepped back, box stretcher, the chair features Manwaring's characteristic curved brackets between the front legs and seat rails. A devotee of the Chinese taste, the chair exhibits blind fret geometric carvings to the front rail and legs and the glorious, vase shaped, back splat is pierced in lattice form typical of the influence and the man. A contemporary of Thomas Chippendale, and a considerable rival, elements such as the crest rail and shepherd's crook arms could easily be from either school with both men producing many similar designs in their respective publications. The arms shaped and relief carved with foliate detail. The warmth of colour and beautifully aged patina of the mahogany compliment the perfect proportions, in harmony offering a chair that is exceptionally aesthetically pleasing. The drop in seat is traditionally stuffed and upholstered in a floral tapestry cloth and could easily be recovered to suit. Superbly executed and with massive appeal and charm this chair is delivered waxed, polished and ready for the home.

Search [London Fine for #LFA-1391](#) or scan the QR code for more photos and details

### DIMENSIONS

Max Width: 64cm (25.25")

Max Depth: 57cm (22.5")

Max Height: 90cm (35.5") Seat Width: 56cm (22")

Seat Depth: 43cm (17")

Seat Height: 40cm (15.75") Find out more about Robert Manwaring [here](#)

