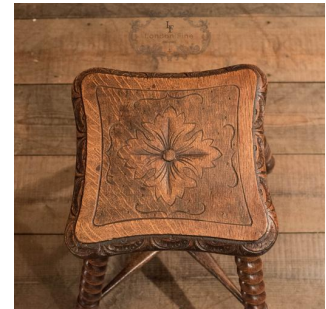




## Victorian Turned Oak Stool, c.1880



### DESCRIPTION

Our Stock # LFA-1401 This is an antique, Victorian, turned oak, wooden stool, c.1880. Raised on splayed barley twist legs united by a tapered cross stretcher surmounted by an inverted finial to the centre, this stool is full of charm and character. Solidly made with a carved and shaped solid oak top, the foliate decoration is typical of stools of this type. The dished edge rounded for comfort. The honey and russet tones to the hues of the English oak display a good patina in the wax polished finish. Sturdy with solid joints, delivered waxed, polished and ready for the home.

Search [London Fine for #LFA-1401](#) or scan the QR code for more photos and details

### DIMENSIONS

Top Square Max: 30.5cm (12")  
Bottom Max Spread: 38cm (15")  
Max Height: 46cm (18")

