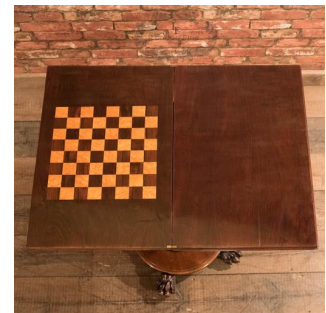
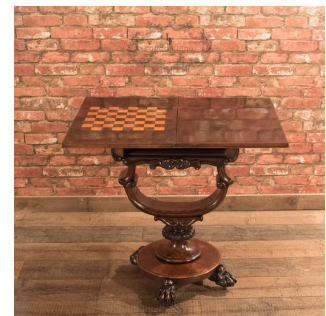
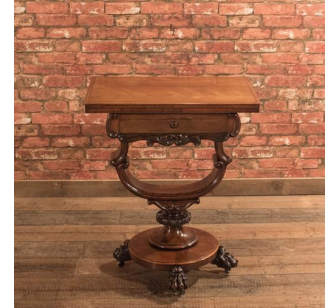


## Victorian Fold Over Games Table, c.1860



### DESCRIPTION

Our Stock # LFA-1407 This is an antique, Victorian fold over games table dating to the mid-Victorian period c.1860. A superior example, this elegant rosewood side/games table displays delicious grain detail in lustrous hues and tones with an attractive and desirable aged patina. Raised on fabulous, well carved, hairy lion's paw feet over the original brass castors, the gently domed lower plate rises into a bulbous turned column with a pair of 'S' scrolls supporting the triple 'C' scroll 'U' shaped bracket that holds aloft the tabletop. The frieze drawer is dressed with a wooden escutcheon and sits above a hidden slide; The foliate carved detail is used as a pull as well as being highly decorative. A double throw lock is present with the key absent. The top turns smoothly through ninety degrees before unfolding to reveal a chess board to one end and doubling the size of the table top — ideal for cards or a board game. A stunning piece of 19th century furniture, delivered waxed, polished and ready for the home.

Search [London Fine](#) for #LFA-1407 or scan the QR code for more photos and details

### DIMENSIONS

Max Width: 62cm (24.5")  
 Depth Closed: 41cm (16.25")  
 Depth Open: 81cm (32")  
 Max Height: 76cm (30")  
 Chess Board: 31cm (12.25")

