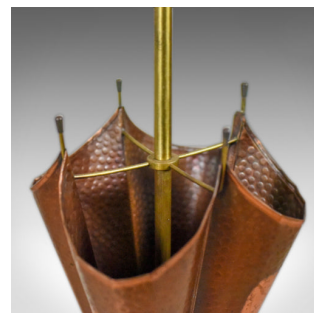
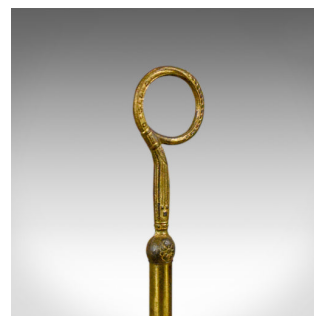
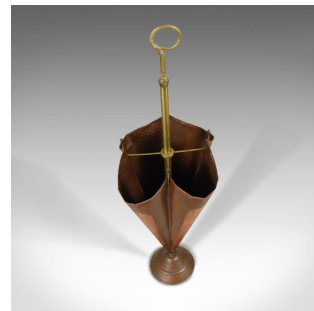


## Antique Umbrella Stand in Copper and Brass, French Early 20th Century Circa 1920



### DESCRIPTION

Our Stock # 11.3489

This is an antique umbrella stand in copper and brass, a French piece dating to circa 1920.

- Appealing umbrella form
- Rich, warm tones to the two tone copper broolly
- Anchored by a heavy, leaded base for stability
- Four receptacles divided by bar stretchers
- Tall brass handle rises to looped carry handle

Ideal for any hall or porch. Solid joints and construction, delivered ready for the home.

Search [London Fine for #11.3489](#), or scan the QR code for more photos and details

### DIMENSIONS

Max Width: 24cm (9.5")

Max Depth: 24cm (9.5")

Max Height: 85cm (33.5")

