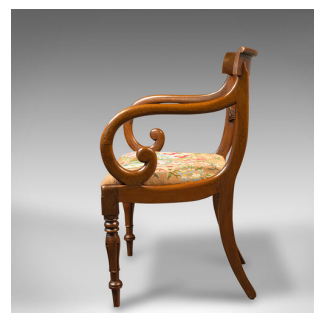
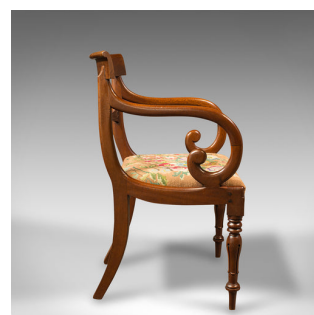


Antique Scroll Arm Chair, English, Armchair, Desk, Needlepoint, Regency, C.1830



DESCRIPTION

Our Stock # 18.8479

This is an antique scroll arm chair. An English, mahogany armchair with needlepoint upholstery, dating to the Regency period, circa 1830.

- Striking serpentine form with an attractive finish
- Displaying a desirable aged patina and in good order throughout
- Select stocks offer fine grain interest and warm caramel hues
- Quality needlepoint upholstery upon the drop-in seat, with colourful bouquet decor
- Bowed top rail with arched edge cascades into striking, scrolled arms
- Lumbar rail accentuated with a central medallion and fluting
- Standing upon cupped legs with cylindrical feet
- Gently splayed rear legs curve gently from the back rail

This is an inviting antique scroll arm chair, with distinguished forms and beautifully presented. The drop-in seat aids reupholstering to individual taste. Solid joints and construction, delivered waxed, polished and ready for the home.

Search [London Fine for #18.8479](#) , or scan the QR code for more photos and details

DIMENSIONS

Max Width: 53.5cm (21")
 Max Depth: 52.5cm (20.75")
 Max Height: 84.5cm (33.25")
 Seat Width: 43cm (17")
 Seat Depth: 41.5cm (16.25")
 Seat Height: 44.5cm (17.5")

LIST PRICE

£925.00

