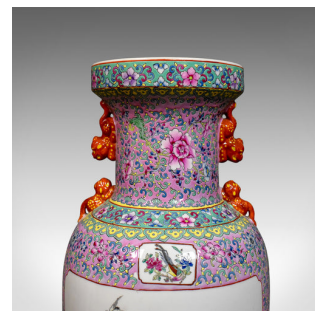
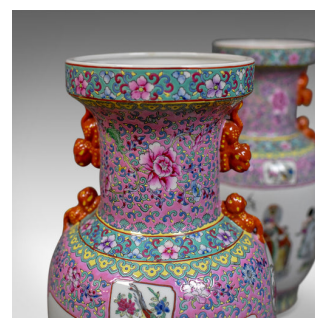


## Mid-Century Pair of Chinese Baluster Vases, Hand Painted Ceramic Urns



## DESCRIPTION

Our Stock # LFA-1806

This is a mid-century pair of Chinese baluster vases, hand painted ceramic urns.

- Imposing quality pair of ceramic vases
- Profusely decorated in blushes and reds
- Free from any damage or marks
- Intense floral design to the neck and framing the panels
- Opposing panel scenes depicting figures and birds
- Mythical beasts as handles to the neck and shoulders

Sure to brighten any space, delivered ready for the home.

Search [London Fine for #10.1806](#), or scan the QR code for more photos and details

## DIMENSIONS

Max Width: 30.5cm (12")

Max Depth: 30.5cm (12")

Max Height: 61cm (24")

Neck Diameter: 21.5cm (8.5")

