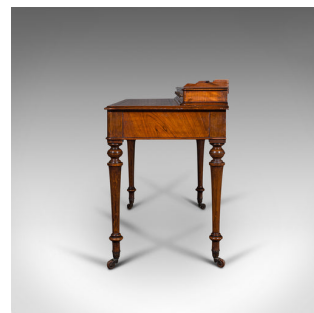
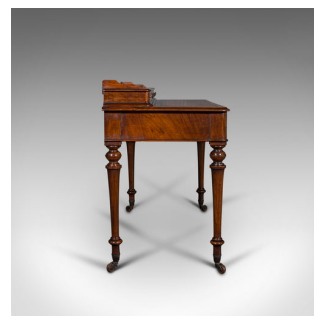


Antique Writing Desk, English, Burr Walnut, Correspondence Table, Victorian



DESCRIPTION

Our Stock # 18.8079

This is an antique writing desk. An English, burr walnut correspondence table, dating to the mid Victorian period, circa 1860.

- The essence of mid Victorian elegance with strikingly figured appearance
- Displays a desirable aged patina and in good order
- Superb burr walnut stocks show superior grain interest
- Beams with rich caramel hues throughout beneath the wax polish finish
- Arranged with a suite of document drawers above and below the writing surface
- Low back rest sits above the super structure with three inset drawers dressed with pairs of small pulls
- Dashing writing surface accentuated with an ebonised inset border
- Gently rolled edge sits at a comfortable height of 72.5cm (28.5")
- Wide drawers set within the deep front apron, dressed with brass drop handles over circular backplates
- Quality mahogany lined drawer boxes with period retailer's label within the right-hand drawer
- Raised upon tapering legs with carved cups to knee and turned collars below

DIMENSIONS

Max Width: 121.5cm (47.75")
 Max Depth: 54cm (21.25")
 Max Height: 84.5cm (33.25")
 Writing Surface Width: 118cm (46.5")
 Writing Surface Depth: 31.5cm (12.5")
 Writing Surface Height: 72.5cm (28.5")



Search [London Fine](#) for #18.8079, or scan the QR code for more photos and details

+44 (0) 207 1833 511

London Fine Ltd
 The Antique Village
 The Old Whiteways Cider Factory
 Hele, Devon, EX5 4PW

sales@londonfine.co.uk
 E. & O. E.