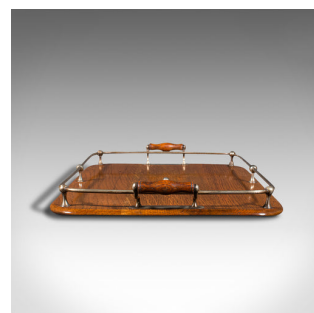
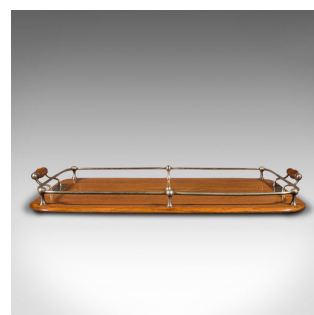
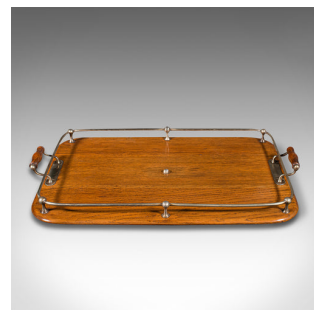


Antique Afternoon Tea Tray, English, Oak, Serving Platter, Edwardian, Circa 1910



DESCRIPTION

Our Stock # 18.8071

This is an antique afternoon tea tray. An English, oak and cast metal serving platter, dating to the Edwardian period, circa 1910.

- Attractive serving tray with fine finish and colour
- Displays a desirable aged patina and in good order
- Select oak shows superb grain interest
- Bright caramel hues beam beneath a wax polish finish
- Polished silver plate gallery rail to the perimeter
- Dressed with turned oak carry handles upon serpentine supports
- Raised slightly upon squat studded feet
- Stamped to one handle mount with EPNS

This is a delightful antique afternoon tea tray, with great Edwardian appeal to the craftsmanship. Delivered waxed, polished and ready for the home.

Search [London Fine for #18.8071](#) , or scan the QR code for more photos and details

DIMENSIONS

Max Width: 57cm (22.5")
 Max Depth: 36.5cm (14.25")
 Max Height: 8cm (3.25")
 Internal Width: 49cm (19.25")
 Internal Depth: 32cm (12.5")
 Internal Height: 3cm (1.25")

