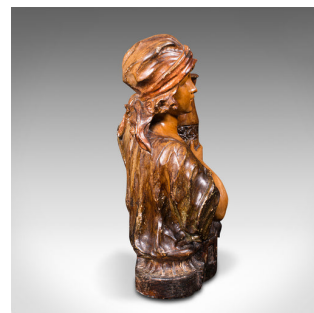
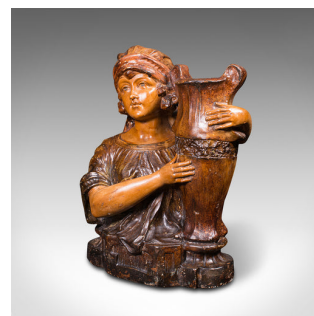
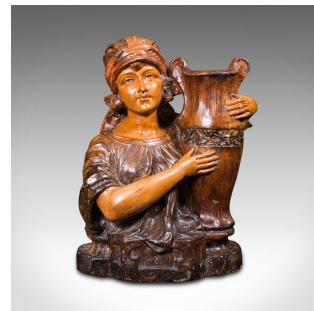


Antique Female Portrait Bust, French, Decorative Figure, Candle Holder, C.1900



DESCRIPTION

Our Stock # 18.8044

This is an antique female portrait bust. A French, plaster decorative figure with candle holder, dating to the late Victorian period, circa 1900.

- Depicting a rural French woman carrying an amphora
- Displays a desirable aged patina and in good order
- Quality plaster bust with appealing colour and detail
- Amphora candle nozzle with an opening diameter of 5cm (2")
- Realistic form, with a natural, forlorn facial rendition
- Inscribed to rear with a stylised maker's initial of 'PB'
- Further marked with 'Depose, 1276'

This is a distinctive antique portrait bust, with Art Nouveau taste and useful candle holder. Delivered polished and ready to display.

Search [London Fine for #18.8044](#), or scan the QR code for more photos and details

DIMENSIONS

Max Width: 31cm (12.25")

Max Depth: 16.5cm (6.5")

Max Height: 39cm (15.25")

LIST PRICE

£995.00

