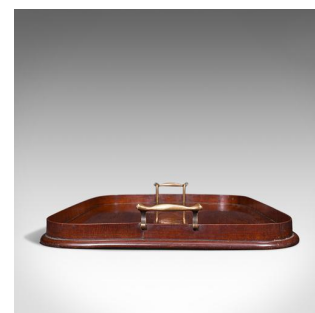
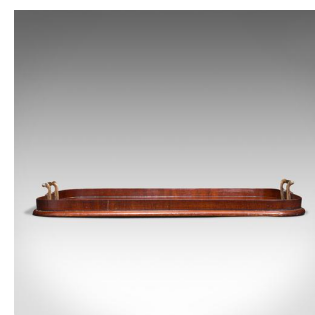
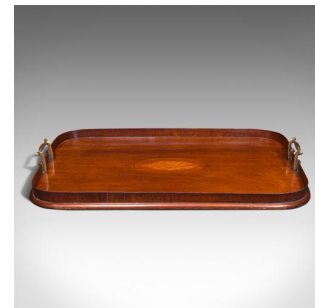


Antique Serving Tray, English, Mahogany, Inlay, Afternoon Tea, Victorian, C.1900



DESCRIPTION

Our Stock # 18.7858

This is an antique serving tray. An English, mahogany and boxwood inlaid butler's afternoon tea tray, dating to the late Victorian period, circa 1900.

- Of delightful quality and rich finish
- Displays a desirable aged patina throughout
- Select stocks show fine grain interest and rich russet hues
- Brass handles to either side with sinuous, shaped forms
- Accentuated to the centre with a boxwood inlaid conch shell motif

This is a charming antique serving tray, set to add elegance to an afternoon tea gathering. Delivered waxed, polished and ready to serve.

Search [London Fine for #18.7858](#), or scan the QR code for more photos and details

DIMENSIONS

- Max Width: 56cm (22")
- Max Depth: 36.5cm (14.25")
- Max Height: 6cm (2.25")
- Interior Width: 53.5cm (21")
- Interior Depth: 34.5cm (13.5")
- Interior Height: 2.5cm (1")

