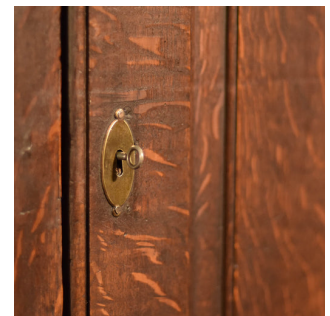


Late Georgian English Oak Cupboard, c.1800



DESCRIPTION

Our Stock # LFA-1349 This is an antique, late Georgian, two door housekeeper's cupboard, c.1800, ideal for use as a larder or wardrobe. Standing upon a bracketed plinth base, the English oak displays wonderful medullary rays in this period cabinet that features wide twin doors with chamfered double field panels, mounted into stout, inch and a quarter thick, frames. The doors close on impressive, large, shaped, butterfly hinges and secure on long, iron shoot bolts and a spring catch. The keyhole dressed with a brass escutcheon with key present as a pull. The cupboard is presently fitted with a single hanging rail although it would be easy to reinstate shelves as the side brackets are present. The back of the cabinet is closed in with a classic eight panel wall. A deep and generous crown moulding completes the cabinet and brings proportion to this wonderful piece which has solid joints and construction and is delivered waxed, polished and ready for the home.

Search [London Fine for #LFA-1349](#) or scan the QR code for more photos and details

DIMENSIONS

Max Width: 166cm (65.5")
Base Width: 156cm (61.5")
Max Depth: 50cm (19.75")
Max Height: 166cm (65.25")

