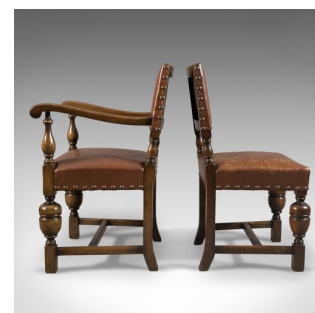
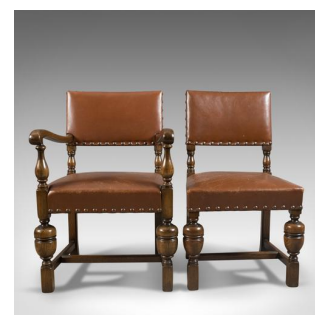


Set of Six Antique Dining Chairs, English, Edwardian Cromwellian Revival, Oak



DESCRIPTION

Our Stock # LFA-1791

This is a set of six antique dining chairs, English, Edwardian Cromwellian revival chairs in oak dating to circa 1910.

- English oak with good, consistent colour and grain interest
- Well sprung and traditionally stuffed for comfort
- Finished in a quality leather hide with bold, studded finish
- Padded seat backs raised on turned stiles
- Scrolled grips to shaped armrests
- Magnificent 'cup and cover' baluster front legs
- Square section rear legs with a kick at the foot
- United by a strong 'H' stretcher
- Of quality craftsmanship throughout

A fine set of chairs suitable for daily use. Solid joints and construction, delivered waxed, polished and ready for the home.

Search [London Fine for #LFA-1791](#) or scan the QR code for more photos and details

DIMENSIONS

- Carvers (x2)
- Max Width: 63cm (24.75")
- Max Depth: 51cm (20")
- Max Height: 89cm (35")
- Seat Width: 47cm (18.5")
- Seat Depth: 43.25cm (17")
- Seat Height: 48.25cm (19")
- Side Chairs (x4)
- Max Width: 55cm (21.75")
- Max Depth: 47cm (18.5")
- Max Height: 89cm (35")
- Seat Width: 51cm (20")
- Seat Depth: 43.25cm (17")

