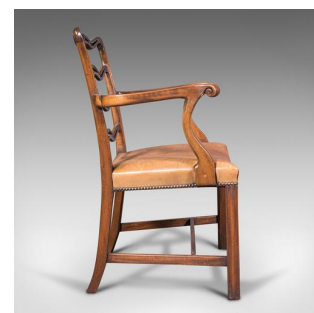
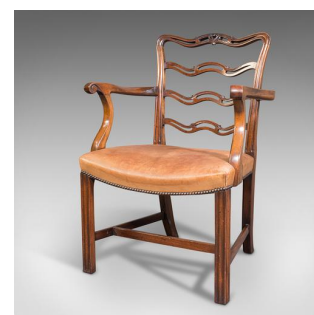


## Vintage Ladder Back Study Chair, Irish, Leather, Elbow Seat, Carver, Art Deco



### DESCRIPTION

Our Stock # 18.7848

This is a vintage ladder back study chair. An Irish, mahogany elbow seat or carver, dating to the Art Deco period, circa 1940.

- Striking chair in Irish Chippendale revival taste
- Of generously wide profile for comfortable modern use
- Displaying a desirable aged patina throughout
- Select mahogany offers rich caramel hues
- Upholstered in a pleasingly patinated light caramel leather
- Pierced ladder back with sinuous forms following the 'Chippendale ear' top rail
- Delightful arms with scrolled knuckles rising upon a serpentine support
- Press stud trim accentuates the seat rail across the bowed front
- Raised upon square section front legs, gently splayed to rear - united by H-stretcher

This is a dashing vintage ladder back study chair, with fascinating revival overtones of the Chippendale manner. Pleasingly aged leather can be reupholstered to individual taste. Delivered waxed, polished and ready to enjoy.

Search [London Fine for #18.7848](#), or scan the QR code for more photos and details

### DIMENSIONS

Max Width: 63.5cm (25")  
 Max Depth: 54.5cm (21.5")  
 Max Height: 93cm (36.5")  
 Seat Width: 53cm (20.75")  
 Seat Depth: 45.5cm (18")  
 Seat Height: 45cm (17.75")

### LIST PRICE

£945.00

