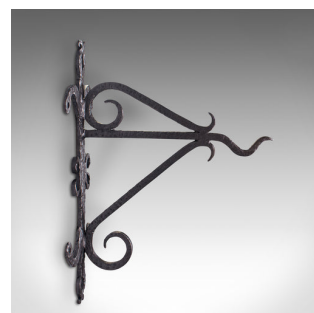
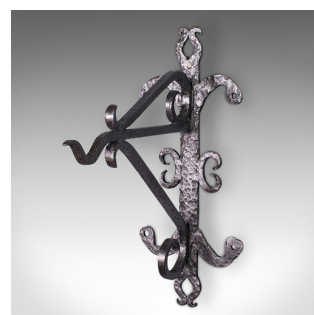
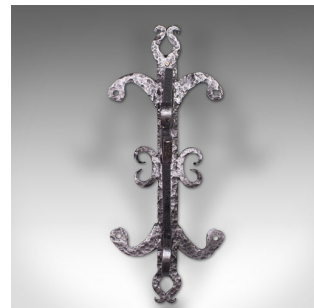


Antique Heavy Wall Bracket, English, Hand Beaten, Wrought Iron, Georgian, C.1800



DESCRIPTION

Our Stock # 18.7604

This is an antique heavy wall bracket. An English, hand beaten wrought iron sign brace, dating to the Georgian period, circa 1800.

- Attractive bracket, ideally suited for mounting shop or public house signs
- Displays a desirable aged patina and in good order
- Hand-beaten wrought iron with pleasingly tactile feel
- Presented with a quality, consistent graphite finish throughout
- Braced upper hook over a lower underhook

This is a superb antique heavy wall bracket, with attractive hand beaten finish. Of heavy duty, ideal for mounting signs outside a premises or institution. Delivered polished and ready to mount.

Search [London Fine for #18.7604](#) , or scan the QR code for more photos and details

DIMENSIONS

Max Width: 24cm (9.5")

Max Depth: 42.5cm (16.75")

Max Height: 59.5cm (23.5")

