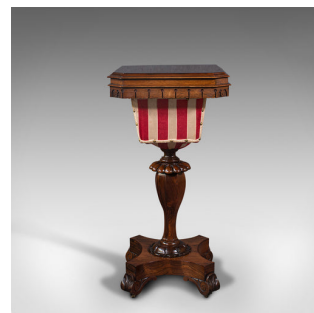
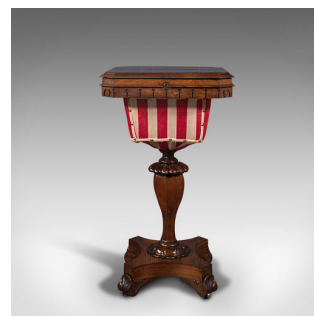


## Antique Sewing Table, English, Ladies Work Box, Side, Early Victorian, C.1850



### DESCRIPTION

Our Stock # 18.7811

This is an antique sewing table. An English, Rosewood ladies work box or side table, dating to the early Victorian period, circa 1850.

- Elegant, early Victorian craftsmanship
- Displays a desirable aged patina throughout
- Select stocks a delight of fine grain interest
- Rich caramel hues beneath the quality wax polish finish
- Tiered lid with canted corners opening smoothly upon internal brass hinges
- Beneath, a pierced apron with a continuous carved pattern
- Dressed with an inset, circular brass lock – key absent
- Finished to each side, ideal for central room placement
- The lined interior in a vibrant pink hue hosting a suite of compartments
  - Central lift-off cover reveals the deep compartment within the fabric covered up-stand
- Raised upon a tapering baluster support with dashing bulb leaf carving

Search [London Fine for #18.7811](#) , or scan the QR code for more photos and details

### DIMENSIONS

Max Width: 45cm (17.75")

Max Depth: 40.5cm (16")

Max Height: 81.5cm (32")

