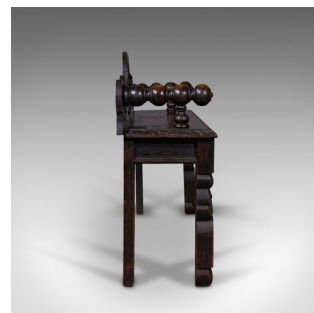


## Antique Gothic Bench, Scottish, Oak, Love Seat, Hall Pew, Victorian, Circa 1850



### DESCRIPTION

Our Stock # 18.7801

This is an antique Gothic bench. A Scottish, oak love seat or hallway pew, dating to the early Victorian period, circa 1850.

- Delightful in character and antique finish
- Displays a desirable aged patina throughout
- Dark Scottish oak shows fine grain interest and deep russet hues
- Ornate carvings present a strong Gothic revival taste
- Dashing low back rest with scrolled detail and superb lion's head masque to centre
- Spherical bobbin turned arms sit proudly upon the bench
- Decorated lower apron with inset oval lozenges united by serpentine borders
- Foliate carved legs with inset flowerhead panels and broad leaf adornments

This is a striking antique Gothic bench, rich in colour and taste. A superb addition to any entrance hall or room. Solid joints and construction, delivered waxed, polished and ready for the home.

Search [London Fine for #18.7801](#) , or scan the QR code for more photos and details

### DIMENSIONS

Max Width: 121.5cm (47.75")

Max Depth: 28.5cm (11.25")

Max Height: 69cm (27.25")

Seat Width: 101cm (39.75")

Seat Depth: 24cm (9.5")

Seat Height: 46.5cm (18.25")

