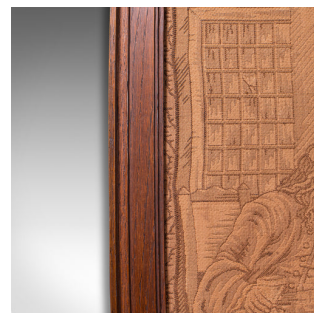


Antique Framed Tapestry, English, Needlepoint, Decorative Wall Panel, Victorian



DESCRIPTION

Our Stock # 18.7793

This is an antique framed tapestry. An English, needlepoint and oak decorative wall panel, dating to the late Victorian period, circa 1900.

- Depicting a charming Georgian tavern scene
- Displays a desirable aged patina with mellow signs of fading
- Quality antique needlepoint upon naturally coloured ground
- Mounted within an oak frame with dark russet hues
- Open back frame ready for wall hanging

This is an antique framed tapestry, presenting a fascinating scene from a Georgian period inn or public house. Delivered polished and ready to display.

Search [London Fine for #18.7793](#), or scan the QR code for more photos and details

DIMENSIONS

Max Width: 53.5cm (21")

Max Depth: 2.5cm (1")

Max Height: 52cm (20.5")

