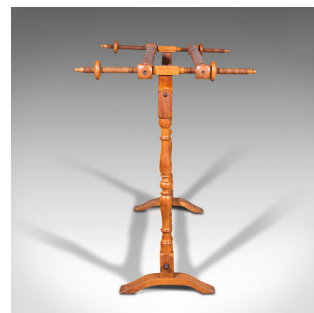
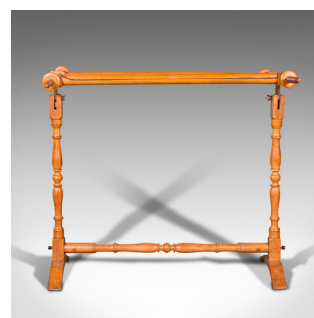


Antique Tapestry Stretcher, English, Beech, Needlepoint Frame, Victorian, 1900



DESCRIPTION

Our Stock # 18.7781

This is an antique tapestry stretcher. An English, beech adjustable needlepoint frame, dating to the Victorian period, circa 1900.

- Adjustable stretcher frame suitable for seated or standing use
- Displaying a desirable aged patina throughout
- Select beech shows fine grain interest and light caramel hues
- Articulated capping reveals a suite of tapestry pins to either end
- Tapestry frame with adjustment along the horizontal plane
- The frame rotating to standing or seated positions
- Lower stretcher rail with turned baluster carvings
- Raised upon two pairs of slipper feet, arched to the middle

This is a charming antique needlepoint stretcher, offering appeal for those of a traditional, creative taste or as a decorative piece. Delivered waxed, polished and ready to be enjoyed.

Search [London Fine for #18.7781](#) , or scan the QR code for more photos and details

DIMENSIONS

Max Width: 98cm (38.5")

Max Depth: 63.5cm (25")

Max Height: 84cm (33")

Spreader Bar Width: 82.5cm (32.5")

Spreader Bar Adjustable Range: 36.5cm (14.25")

