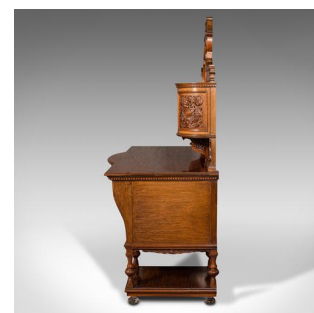
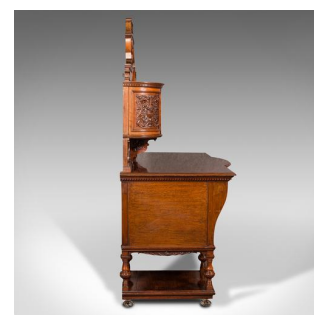


Fine Antique Dressing Table, English, Walnut, Console, Gillow and Co, Victorian



DESCRIPTION

Our Stock # 18.7763

This is a fine antique dressing table. An English, walnut boudoir console table by Gillow and Co, dating to the Victorian period, circa 1880.

- A striking dressing table for the finest of bedrooms
- Displays a desirable aged patina throughout
- Quality walnut presents fine grain interest and rich russet hues
- Profusely carved to every surface, a treat for the senses
- Prominent shield shape mirror sits to the centre with quality, bevelled plate
- Demi-lune bombe cabinets to each side, with ornate carved field panels
- Decorated bracket supports unite these to the wide, deep dressing surface
- Serpentine bow front profile highly distinctive and appealing
- Arranged as a central drawer above the shaped kneehole with a graduated trio either side
- Each dressed with attractive drop handles over decorative brass backplates
- Inset brass locks to each opening – untested, keys absent

Search [London Fine for #18.7763](#) , or scan the QR code for more photos and details

DIMENSIONS

- Max Width: 136.5cm (53.75")
- Max Depth: 67.5cm (26.5")
- Max Height: 168.5cm (66.25")
- Dressing Surface Width: 135.5cm (53.25")
- Dressing Surface Depth: 64.5cm (25.5")
- Dressing Surface Height: 76.5cm (30")
- Mirror Plate Width: 59.5cm (23.5")
- Mirror Plate Depth: 63.5cm (25")
- Kneehole Height: 55.5cm (21.75")

