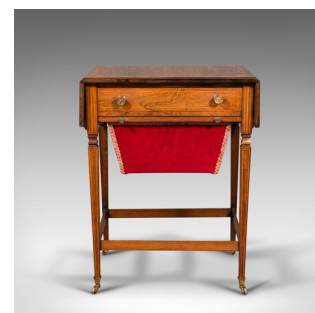


Antique Drop Leaf Sewing Table, English, Rosewood, Side, Lamp, Regency, C.1820



**DESCRIPTION**

Our Stock # 18.7731

This is an antique drop leaf sewing table. An English, rosewood side or lamp table with boxwood inlay, dating to the Regency period, circa 1820.

- Elegant sewing companion with wonderful late Georgian craftsmanship
- Displays a desirable aged patina and in good order
- Superb rosewood shows fine grain interest throughout
- Rich caramel hues beam beneath a wax polish finish
- Drop leaf top extends usefully, supported by articulated flying arms
- Boxwood inlay accentuates the top with quality fan shell motif to corners
  - Wide drawer front decorated with boxwood stringing, accessed by circular brass pulls
- Sliding work bag with crimson damask to outside and contrasting golden brocade trim
  - Of deep proportion, the work bag strikingly lined with quality emerald green baize
  - Slender supports and gently tapering legs united by stretchers to each side
  - The companion riding smoothly upon a set of four brass castors

**DIMENSIONS**

- Folded Width: 51.5cm (20.25")
- Extended Width: 84cm (33")
- Max Depth: 40.5cm (16")
- Max Height: 66.5cm (26.25")

**LIST PRICE**

£1,275.00



Search [London Fine for #18.7731](#) , or scan the QR code for more photos and details