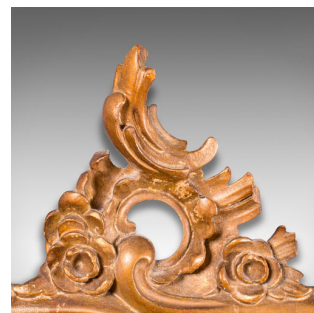


Small Antique Vanity Mirror, Italian, Giltwood, Dressing, Victorian, Circa 1890



DESCRIPTION

Our Stock # 18.7671

This is a small antique vanity mirror. An Italian, giltwood dressing mirror, dating to the late Victorian period, circa 1890.

- Delightfully ornate vanity mirror for the boudoir
- Displays a desirable aged patina - one minor loss to frame under inspection
- Giltwood frame presents appealing golden tones
- Prominent scrolled and foliate motif decorates the frame
- Later mirror plate offers a clear, bright reflection and light foxing
- Dressed with hanging wire to the rear for ease of mounting

This is a charming small antique vanity mirror, with distinctive frame and great colour. Delivered polished and ready to display.

Search [London Fine for #18.7671](#) , or scan the QR code for more photos and details

DIMENSIONS

Max Width: 36.5cm (14.25")
Max Depth: 3.5cm (1.5")
Max Height: 49cm (19.25")
Mirror Plate Width: 23cm (9")
Mirror Plate Height: 30.5cm (12")

LIST PRICE

£625.00

