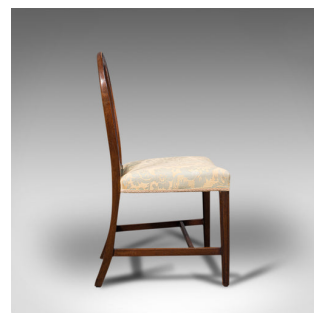


## Pair Of, Antique Hepplewhite Revival Side Chairs, English, Seat, Victorian, 1890



### DESCRIPTION

Our Stock # 18.7695

This is a pair of antique Hepplewhite revival side chairs. An English, mahogany seat, dating to the late Victorian period, circa 1890.

- Delightfully graceful frames and attractive upholstery
- Displaying a desirable aged patina
- Select mahogany shows rich russet hues throughout
- Benefiting from a recent professional reupholstering with quality fabric - some small marks evident under very close inspection
- Classically appealing lyre back seat with arched top rail
- Carved decoration with foliate motif and chasing wheat sheaf border
- Offering a comfortable seat height of 46cm (18") with generous width to the seat
- Superb silk-cotton damask seat coverings in a palette of yellow hues
- Bold foliate pattern against an eye-catching silk ground
- Raised upon square section front legs with tapering rears
- Each leg united by stretchers for extra support

Search [London Fine for #18.7695](#) , or scan the QR code for more photos and details

### DIMENSIONS

Max Width: 52.5cm (20.75")  
 Max Depth: 53cm (20.75")  
 Max Height: 94.5cm (37.25")  
 Seat Width: 52.5cm (20.75")  
 Seat Depth: 43cm (17")  
 Seat Height: 46cm (18")

