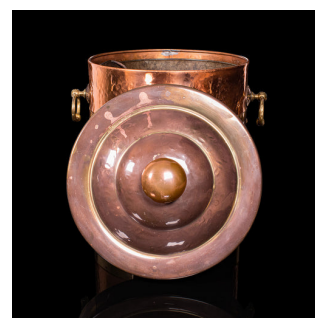


## Antique Fireside Bin, English, Copper, Brass, Decorative, Scuttle, Edwardian



## DESCRIPTION

Our Stock # 18.7641

This is an antique fireside bin. An English, copper and brass decorative coal scuttle, dating to the Edwardian period, circa 1910.

- Presents great colour and tonality
- Displaying a desirable aged patina throughout
- Hand-beaten copper with rich orange hues
- Bound with brass coopering offering a golden contrast
- Brass lid with tapered finish adorned with a squat finial
- Dressed with a pair of brass drop handles over oval backplates
- Removable coal bin replete with handles for ease of access
- Presenting a pleasingly natural finish - ideal for all fuel types

This is a charming antique fireside bin, with great hand-beaten appeal and rich colour. Ideal for coal, logs or kindling this bin would grace any fireplace. Delivered polished and ready for the fire.

Search [London Fine for #18.7641](#) , or scan the QR code for more photos and details

## DIMENSIONS

Max Width: 34.5cm (13.5")  
Max Depth: 30.5cm (12")  
Max Height: 39cm (15.25")  
Bin Width: 27cm (10.75")  
Bin Depth: 27cm (10.75")  
Bin Height: 29cm (11.5")

