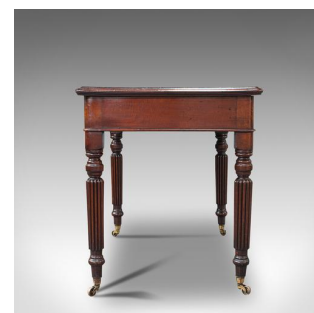


Antique Correspondence Desk, English, Mahogany, Writing Table, Regency, C.1820



DESCRIPTION

Our Stock # 18.7619

This is an antique correspondence desk. An English, mahogany and leather writing table, dating to the Regency period, circa 1820.

- Fine example of a classic staple from the Regency period
- Displays a desirable aged patina throughout
- Select mahogany shows fine grain interest and deep russet hues
- Inset dark blue leather skiver in very good order
 - The generously sized skiver accentuated with gold tooling, foliate motif and embossed detail
- Pair of drawers to front, each dressed with circular drop handle pulls over decorative flowerhead backplates
- Inset, brass-lined locks to each drawer – in working order with key present
- Standing upon a quartet of carved and reeded legs, riding smoothly upon brass castors

This is an appealing antique correspondence desk, with a quality leather skiver and attractive Mahogany stocks. Solid joints and construction, delivered waxed, polished and ready for the home or office

DIMENSIONS

- Max Width: 107cm (42.25")
- Max Depth: 65.5cm (25.75")
- Max Height: 76cm (30")
- Skiver Width: 90.5cm (35.75")
- Skiver Depth: 49.5cm (19.5")
- Kneehole Height: 60.5cm (23.75")

