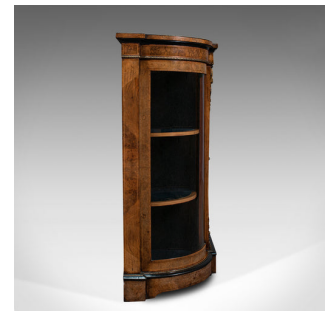


Antique Credenza, English, Burr Walnut, Sideboard, Display Cabinet, Regency



DESCRIPTION

Our Stock # 18.7524

This is an antique credenza. An English, burr walnut sideboard or display cabinet, dating to the Regency period, circa 1820.

- Striking craftsmanship a testament to the inherent quality of this credenza
- Displaying a desirable aged patina and presented in alluring antique condition
- Superb burr walnut shows fine grain interest and mellow caramel hues
- Distinctive cabinet doors with original plate glass in very good order
 - Narrow breakfront form with delightful, sinuous corners beneath a dashing book-matched top
- Central cabinet door a sight to behold with quarter book-matched field panel
- Further decorated to distinction with ornate boxwood inlay centrepiece
- Ormolu corbel frame the door with appealing neoclassical taste
- Three pairs of shelves provide a useful arrangement to the cabinet interior
- Each velvet-lined shelf a tactile delight in a deep navy blue
- Inset brass lined locks to each door – correct key absent

Search [London Fine for #18.7524](#) , or scan the QR code for more photos and details

DIMENSIONS

Max Width: 152cm (59.75")
 Max Depth: 41.5cm (16.25")
 Max Height: 103cm (40.5")

LIST PRICE

£6,995.00

