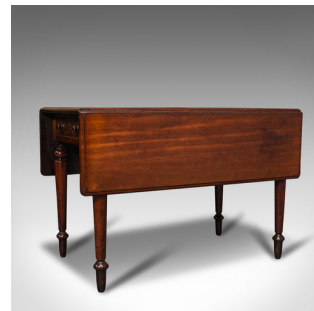


## Antique Pembroke Table, English, Mahogany, Extending, Dining, Regency, C.1820



### DESCRIPTION

Our Stock # 18.7365

This is an antique Pembroke table. An English, mahogany extending dining table, dating to the Regency period, circa 1820.

- Graceful Pembroke table of generous size and proportion
- Displays a desirable aged patina with pleasingly aged top
- Select mahogany offers fine grain interest and deep russet hues
- Presented with a quality wax polish finish
- Supported by twin folding arms to either side, the leaves open to offer a comfortable 4-seat dining table
- Offering a useful cutlery drawer to one end, opposite a dummy drawer front to the reverse
- Both fascia dressed with circular wooden pulls and cockbeading to edges
- Raised upon tapered legs with circular cup mouldings over spade feet

This is a versatile and attractive antique Pembroke table, presenting a pleasingly patinated top and rich colour. Solid joints and construction, delivered waxed, polished and ready for the kitchen or dining room.

### DIMENSIONS

Folded Width: 61cm (24")  
Folded Depth: 104cm (41")  
Folded Height: 69.5cm (27.25")  
Extended Width: 116.5cm (45.75")  
Extended Depth: 104cm (41")  
Extended Height: 69.5cm (27.25")

### LIST PRICE

£1,695.00



Search [London Fine](#) for #18.7365, or scan the QR code for more photos and details

+44 (0) 207 1833 511

London Fine Ltd  
The Antique Village  
The Old Whiteways Cider Factory  
Hele, Devon, EX5 4PW

[sales@londonfine.co.uk](mailto:sales@londonfine.co.uk)  
E. & O. E.