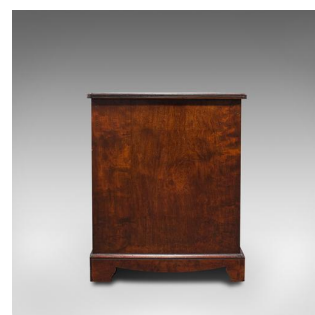




Antique Morning Room Desk, English, Walnut, Writing Table, Victorian, Circa 1880



DESCRIPTION

Our Stock # 18.7289

This is an antique morning room desk. An English, walnut writing table dating to the Victorian period, circa 1880.

- Delightful twin pedestal form and of superior quality
- Displaying a desirable aged patina and in good antique order
- Select walnut offers fine grain interest and rich russet hues
- Drawer fronts crafted from stocks of attractive burr walnut
- Generously sized top with large leather skiver with a width of 109cm (43")
 - Forest green leather enhanced with gold tooling and an embossed, chased edge pattern
- Arranged as a suite of eight drawers, each dressed with inset brass lined locks – keys absent
 - Wide central drawer dressed with circular pulls decorated with fern leaf motif
 - Side drawers open smoothly with brass drop handles over pierced oval backplates
 - Upper right hand drawer fitted with a stationery divider for added purpose
 - Benefits from a useful, extra-deep lower filing drawer to left-hand bank

DIMENSIONS

Max Width: 120cm (47.25")
Max Depth: 59.5cm (23.5")
Max Height: 72.5cm (28.5")
Skiver Width: 109cm (43")
Skiver Depth: 49cm (19.25")
Kneehole Height: 60cm (23.5")

Search [London Fine for #18.7289](#) , or scan the QR code for more photos and details

