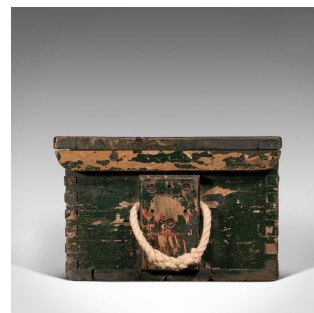


Small Antique Mariner's Trunk, English, Pine, Chest, Late Victorian, Circa 1900



DESCRIPTION

Our Stock # 18.6598

This is a small antique mariner's tool trunk. An English, pine chest, dating to the late Victorian period, circa 1900.

- Delightfully weathered and of enduring practicality
- Displaying a desirable aged patina throughout
- Painted pine in deep green hue with hints of natural finish
- Stout lid opens to reveal natural caramel hues
- Dressed with a long iron clasp to front
- Two broad strap hinges to the inside articulate the lid
- Useful tool tray sits within guided runners and can be easily removed
- Pair of rope handles sit within broad, strong keepers

This is a charming small antique mariner's chest with pleasingly patinated appearance. Delivered polished and ready to serve.

Search [London Fine for #18.6598](#) , or scan the QR code for more photos and details

DIMENSIONS

Max Width: 66cm (26")
Max Depth: 37cm (14.5")
Max Height: 22cm (8.75")

LIST PRICE

£395.00

