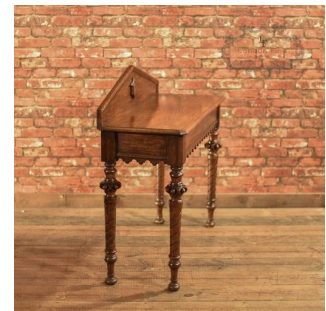


Regency Oak Console Table, c.1820



DESCRIPTION

Our Stock # LFA-1329 This is an antique, Regency period console table dating to c.1820. Raised on turned feet with tapered, helix reeded column legs beneath cup and ball caps, the deep apron is dressed with inverted castellated swags. To the right hand end, a hidden, blind drawer is oak lined with hand cut dovetails offering useful storage within. The top is in fine order and displays attractive graining with a moulded edge detail and canted corners. To the rear, a generous pitched up-stand is decorated with a carved shield motif and moulded edge. In fine order and warm russet tones glowing in the deep waxed finish this table has solid joints and is delivered waxed, polished and ready for the home.

Search [London Fine for #LFA-1329](#) or scan the QR code for more photos and details

DIMENSIONS

Max Width: 105cm (41.25")

Max Depth: 40cm (15.75")

Max Height: 74cm (29.25") Plus Up-stand Max Height 21cm (8.25")

