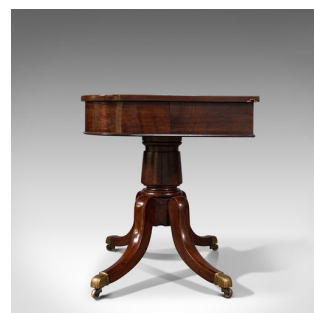
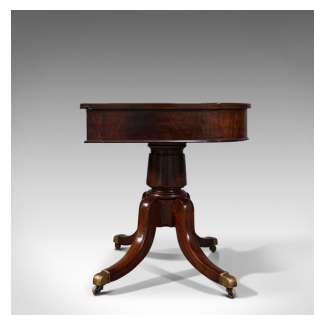


## Pair Of Antique Hall Tables, English, Mahogany, Side, Lamp, Regency, Circa 1830



### DESCRIPTION

Our Stock # 18.7062

This is a pair of antique hall tables. An English, mahogany side or large lamp table, dating to the Regency period, circa 1830.

- Graced with fine colour and attractive craftsmanship
- Displaying a desirable aged patina and in good order
- Select mahogany shows fine grain interest throughout
- Deep caramel hues beam beneath a quality wax polish finish
- Lovingly created from a quality 19th century dining table
- Demi-lune in form with deep aprons beneath a pronounced top
- Supported upon a tapering baluster column framed by shapely knees
- Four squat cabriole legs ride smoothly upon a set of castors beneath brass-tipped toes

toes

This is an attractive pair of antique hall tables, with great colouration and quality mahogany stocks. Solid joints and construction, delivered waxed, polished and ready for the home.

Search [London Fine for #18.7062](#), or scan the QR code for more photos and details

### DIMENSIONS

Max Width: 122cm (48")

Max Depth: 56cm (22")

Max Height: 71.5cm (28.25")

