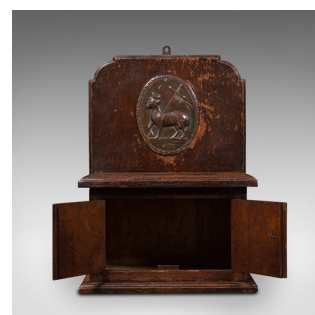


## Antique Hanging Court Box, English, Oak, Middle Temple, London, Victorian, 1900



### DESCRIPTION

Our Stock # 18.7368

This is an antique hanging court box. An English, oak and brass key box with an emblem for The Honourable Society of Middle Temple London, dating to the Victorian period, circa 1900.

- Of compact proportion with a fascinating legal background
- Displaying a desirable aged patina with appealing weathering
- Oak offers rich caramel hues and patinated grain interest
- Wisps of medullary rays add distinction
- Weathered bronze emblem with the 'Lamb of God' motif carrying the flag of St. George

George

- Reads 'Hon. Society of Middle Temple' - one of the four inns of court in London
- Pair of doors to base, opening with a small brass pull
- Can be displayed as free standing or wall mounted with small hanging loop to rear

This is a charming antique court box, with links to British legal history and appealingly weathered. Delivered waxed, polished and ready to display.

Search [London Fine](#) for #18.7368, or scan the QR code for more photos and details



### DIMENSIONS

Max Width: 26cm (10.25")

Max Depth: 18cm (7")

Max Height: 38cm (15")