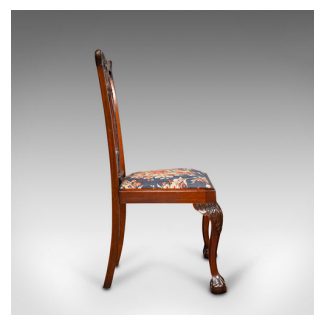
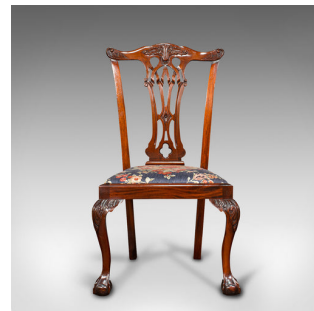


4 Antique Dining Chairs, English, Mahogany, Seat, After Chippendale, Victorian



DESCRIPTION

Our Stock # 18.6837

This is a set of 4 antique dining chairs. An English, quality mahogany seat in the manner of Chippendale, dating to the late Victorian period, circa 1900.

- A suite of striking colour and fascinating detailing
- Displays a desirable aged patina and in very good order
- Select mahogany shows rich russet hues and fine grain interest from beneath a wax polish finish
- Benefiting from a recent professional reupholster with quality textile seat coverings
- Broad top rail issuing wing-like across the whole with carved bouquet to centre and scrolled ends
- Pierced, open back splat with complex carvings redolent of the finest Chippendale
- Dashing floral scenes to the cushions a riot of colour against a deep blue ground
- Drop-in seats afford easy recovering to individual taste
- Wide carved knees sit prominently beneath a square seat frame with chamfered edges
- Tall, elegant cabriole legs to the front with gently splayed square section legs to rear
- Standing upon superb ball and claw feet at the front, finishing the chairs in a period flourish

DIMENSIONS

Max Width: 57.5cm (22.75")
 Max Depth: 54cm (21.25")
 Max Height: 103cm (40.5")
 Seat Width: 48cm (19")
 Seat Depth: 37.5cm (14.75")
 Seat Height: 47cm (18.5")



Search London Fine for #18.6837, or scan the QR code for more photos and details.

+44 (0) 207 1855 511

London Fine Ltd
 The Antique Village
 The Old Whiteways Cider Factory
 Hele, Devon, EX5 4PW

sales@londonfine.co.uk

E. & O. E.