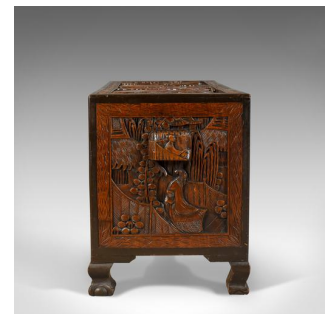


## Early 20th Century Camphor Wood Chest, Oriental Carved Trunk



### DESCRIPTION

Our Stock # LFA-1735

This is an early 20th century camphor wood chest with oriental carved scenes. A trunk dating to circa 1930.

- Fabulously decorated with profusely carved panels
- Delineated with ebonised frames and bands
- Standing upon a shaped apron and squat legs
- Equally well made, three panel back
- The top, end panels and field panels vigorously carved
- Depicting oriental scenes of figures, trees, pagodas and alike
- The end panels fitted with robust carrying handles
- The pair of doors to the front framed in low relief foliate carvings
- Dressed with a quality, single brass ring handle
- Opening to reveal generous storage space divided by a single shelf
- Accompanied by the delightful aroma of the camphor wood

Search [London Fine](#) for #LFA-1735 or scan the QR code for more photos and details

### DIMENSIONS

Max Width: 104.25cm (41")

Max Depth: 49cm (19.25")

Max Height: 61cm (24")

