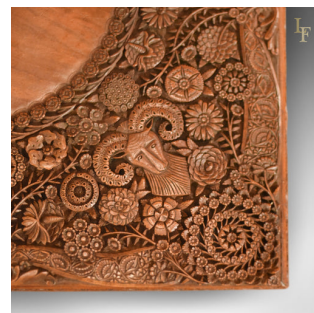


## Victorian Carved Indian Tea Table, c.1900



## DESCRIPTION

Our Stock # 10.1342

This is an antique, Victorian tea table dating to c.1900.

Based around symmetrical anchors of radial decoration at the corners and mid points, bearded goats heads and the inner ring of flower heads, the profusely carved rosettes vary in design in an astonishing array and complexity testament to the sheer skill of the artisan carver.

The carving continues in the edge detail and into the knees of the sinuous cabriole legs that terminate in ball and claw feet.

The centre of the table top displays a wonderful colour with good grain detail and a fine oiled finish.

Fascinating with aesthetic appeal, solid joints, delivered ready for the home.

Search [London Fine for #10.1342](#) , or scan the QR code for more photos and details

## DIMENSIONS

Max Width: 53.5cm (21")

Max Depth: 53.5cm (21")

Max Height: 56cm (22")

