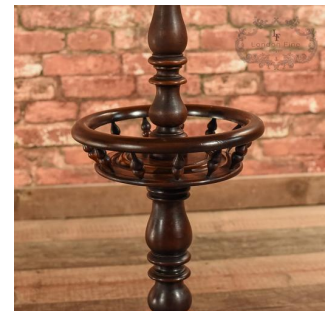




## Victorian Mahogany Side Table, c.1860



### DESCRIPTION

Our Stock # LFA-1345 This is an antique, Victorian 'ship's' table dating to c.1860. With nautical overtones, this delightful little side table stands proud on three feet with scrolled toes beneath a highly polished dish turned base plate. A stout turned column rising from the centre, supports the top as well as a flared, galleried under-tier, ideal for a ball of wool or two whilst knitting. The top displays good colour and grain detail to the choice mahogany and is finished with a moulded edge detail. Solid joints and stable, delivered waxed, polished and ready for the home.

Search [London Fine](#) for #LFA-1345 or scan the QR code for more photos and details

### DIMENSIONS

Max Width: 46cm (18")  
Max Depth: 46cm (18")  
Max Height: 73cm (28.75")

