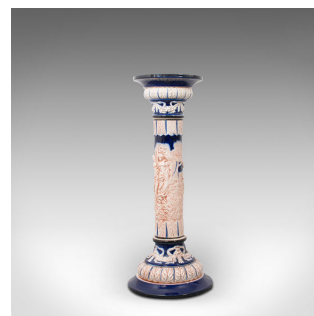
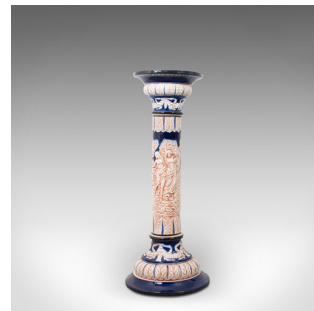


## Antique Decorative Jardiniere, English, Ceramic, Hall, Plant Stand, Victorian



## DESCRIPTION

Our Stock # 18.7166

This is an antique decorative jardiniere. An English, ceramic hallway plant stand, dating to the late Victorian period, circa 1900.

- Dashing, tall hall stand with fascinating decorative finish
  - Displays a desirable aged patina - some hairline cracks to base under close inspection
- Ceramic finished in cobalt blue over a cream ground
- Tall column form with broad, flared capitol and tiered base
  - Planter top with a display diameter of 26.5cm (10.5") and smaller plant recess of 9cm (3.5")
- Bands of foliate leaves and grapevines decorating the upper
- Scenes with female forms in a close embrace to either side
- Raised on a tall podium base with a tapering circular plinth

This is an appealing decorative jardiniere with charming figural scenes and attractive colour. Ideal for the hallway or living room, delivered polished and ready to display.

Search [London Fine](#) for #18.7166, or scan the QR code for more photos and details

## DIMENSIONS

Max Width: 33cm (13")

Max Depth: 33cm (13")

Max Height: 80.5cm (31.75")

