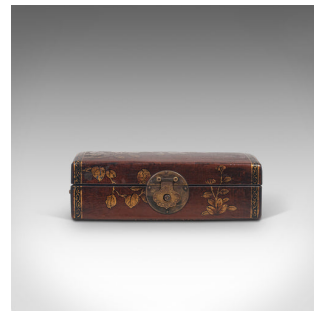


Antique Jewellery Box, Japanese, Leather, Desk Caddy, Meiji Period, Circa 1900



DESCRIPTION

Our Stock # 18.7179

This is an antique jewellery box. A Japanese, leather bound desk caddy, dating to the Meiji period in the late 19th century, circa 1900.

- Intriguing finish and dark tones
- Displays a desirable aged patina, commensurate with age
- Leather bound with fantastic dark russet hues
- The leather pleasingly aged and decorated with gold tooled borders
- Dome top lid offers a charming scene of two birds on a sprouting branch
- Opening to reveal the interior with removable small tray
- Dressed with a large circular clasp to the front
- Drop handles to each side with engraved bat wing motif

This is a fascinating and inviting antique jewellery box, set to add mystique to a dressing table or as an unusual desk tidy. Delivered polished and ready to behold.

Search [London Fine for #18.7179](#) , or scan the QR code for more photos and details

DIMENSIONS

Max Width: 29.5cm (11.5")

Max Depth: 17.5cm (7")

Max Height: 10cm (4")

