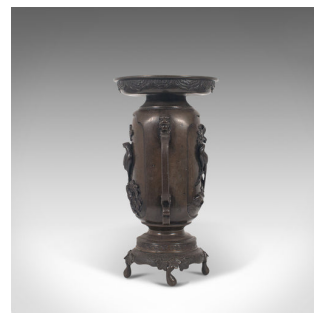
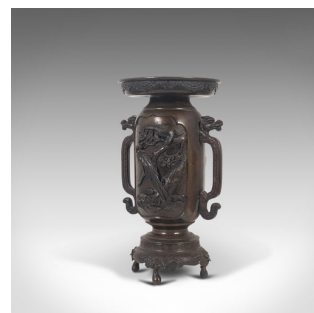
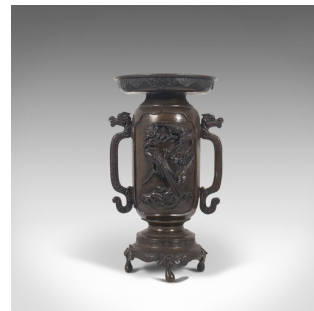


Antique Decorative Vase, Japanese, Bronze, Meiji Period, Late 19th, Circa 1900



DESCRIPTION

Our Stock # 18.7185

This is an antique decorative twin-handled vase. A Japanese, bronze Meiji period vase, dating to the late 19th century, circa 1900.

- An impressive vase with striking detail
- Displaying a desirable aged patina by way of fine weathering
- Bronze shows wonderful tonality with a natural tarnish from decades of polishing
- Decorated with the hallmarks of the Meiji period of Japanese history (1868-1912)
- Wide rim with rolled lip, embellished by way of garland detail beneath
- Panel scenes to both sides with three dimensional birds set amongst forest scenes
- Birds of Paradise inhabit one side with a Falcon or Hayabusa to the reverse
- Superb dragon handles to either side with serpentine form
- Greek key pattern adds interest to the support
- Raised upon a base of foliate leaves with squat, teardrop legs

Search [London Fine for #18.7185](#) , or scan the QR code for more photos and details

DIMENSIONS

Max Width: 18.5cm (7.25")

Max Depth: 16.5cm (6.5")

Max Height: 31.5cm (12.5")

Opening Diameter: 6cm (2.25")

LIST PRICE

£1,695.00

