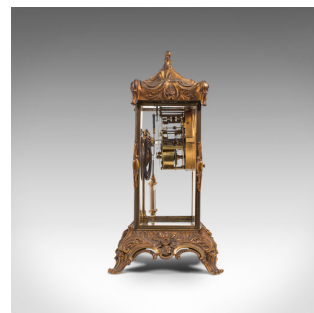


Antique Mantel Clock, French, Gilt Bronze, Ormolu, Brocot Escapement, Circa 1900



DESCRIPTION

Our Stock # 18.6995

This is an antique mantel clock. A French, four glass, gilt bronze and ormolu decorated clock with visible Brocot escapement, dating to the late 19th century, circa 1900.

- Superbly decorated timepiece for the mantel
- Displaying a desirable aged patina commensurate with age
- Gilt bronze and ormolu shimmer with warm golden tones
- Quality bevelled glass free of cracks or chips
- Arresting scroll, acanthus and floral festoons to the surmount recalling the elaborate Rococo taste
- Elegant spade hour and minute hands, pleasingly slender in form
- Visible Brocot escapement to a two-train movement adding fascinating visual and horological interest
 - Roman numeral decorated chapter ring with minute indication and inset winder apertures — key present
- Striking on the hour with a soothing lilt, a single gong strike marks the half-hour
- Fine adjustment for slow and fast at the 12 o'clock position
- Weighted faux-Mercury, compensated pendulum offering a gently mesmerizing motion

DIMENSIONS

Max Width: 22.5cm (8.75")
 Max Depth: 19.5cm (7.75")
 Max Height: 39cm (15.25")
 Face Diameter: 10cm (4")



Search [London Fine](#) for #18.6995, or scan the QR code for more photos and details

+44 (0) 207 1833 511

London Fine Ltd
 The Antique Village
 The Old Whiteways Cider Factory
 Hele, Devon, EX5 4PW

sales@londonfine.co.uk
 E. & O. E.