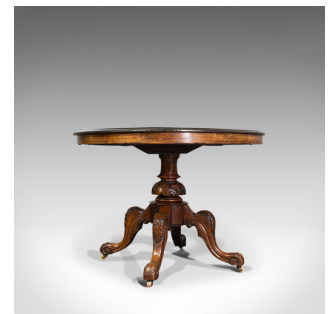


## Antique Breakfast Table, English, Walnut, Mahogany, Tilt Top, Oval, Victorian



### DESCRIPTION

Our Stock # 18.7039

This is an antique breakfast table. An English, walnut over mahogany tilt top oval table, dating to the Victorian period, circa 1870.

- Beautifully appointed Victorian table
- Displays a desirable aged patina - in good original order throughout
- Oval walnut top shows fine grain interest and light caramel hues
- Mahogany lower contrasting with rich russet hues and carved details
- Striking quarter bookmatched stocks with boxwood foliate inlay to the centre
- Extra appeal with fine stringing bordering the centrepiece
- Ebonised moulded edge sits above the stout apron
- Lever to the underside releases the tilt top for added versatility
- Central baluster support blooms upwards from a carved acanthus bulb
- The quartet of serpentine cabriole legs with pronounced, foliate carved knees
- Drop pendant finial to the underside with gently chamfered dome shape

Search [London Fine for #18.7039](#) , or scan the QR code for more photos and details

### DIMENSIONS

Max Width: 132.5cm (52.25")  
 Max Depth: 99.5cm (39.25")  
 Max Height: 72.5cm (28.5")  
 Tilted Width: 81.5cm (32")  
 Tilted Depth: 81.5cm (32")  
 Tilted Height: 154.5cm (60.75")  
 Kneehole Height: 66cm (26")

