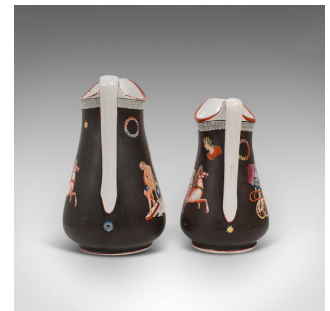


Antique Pair, Decorative Pouring Jugs, English, Ceramic, Serving Ewer, Victorian



DESCRIPTION

Our Stock # 18.7058

This is an antique pair of decorative pouring jugs. An English, ceramic serving ewer in neoclassical taste, dating to the late Victorian period, circa 1900.

- Fascinating jugs with great Roman scenes
- Displaying a desirable aged patina - in very good order
- Shapely ceramic form with slender handles and chamfered pouring spouts
- Deep brown in colour, the ground presented in matte finish with orange over white upper
- Larger in size, the first jug displays a court scene
- Slightly smaller second jug depicts a Roman chariot complete with rider
- Incidental details include small decorative vases and colourful wreathes
- Matching serial numbers to the base read 1-7980 and 2-7980 respectively

This is a highly decorative pair of antique pouring jugs, with appealing matte finish and vibrant colour palettes. Ever-popular neoclassical decoration creates a striking display piece. Delivered polished and ready for the home or collection.

Search [London Fine for #18.7058](#), or scan the QR code for more photos and details

DIMENSIONS

First Jug Width: 15cm (6")
 First Jug Depth: 12.5cm (5")
 First Jug Height: 22cm (8.75")
 Second Jug Width: 13cm (5")
 Second Jug Depth: 11cm (4.25")
 Second Jug Height: 19cm (7.5")

