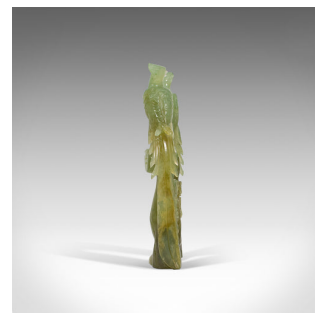


## Pair of, Antique Carved Figures, Oriental, Jade, Bird of Paradise, Victorian



### DESCRIPTION

Our Stock # 18.7041

This is pair of antique carved figures. An Oriental, jade study of birds of paradise sat upon a woodland outcrop, dating to the late Victorian period, circa 1900.

- Elegant decorative appeal
- Displaying a desirable aged patina - free of cracks or marks
- Striking jade expertly hand-carved to a fine translucence
- Beautifully verdant green palette a real highlight of the pair
- Each bird with rakish carved head and long, flowing tail feathers
- Standing proud atop a woodland outcrop
- Decorated with bold, expressive foliate motif

This is a fascinating pair of antique carved figures, with a wonderful translucent jade allowing the light to shine through at the finely carved edges. An eye-catching study, sure to add a decorative touch to any room. Delivered polished and ready to behold.

Search [London Fine for #18.7041](#) , or scan the QR code for more photos and details

### DIMENSIONS

First Bird Width: 7cm (2.75")  
 First Bird Depth: 4cm (1.5")  
 First Bird Height: 23.5cm (9.25")  
 Second Bird Width: 6.5cm (2.5")  
 Second Bird Depth: 3.5cm (1.5")  
 Second Bird Height: 23.5cm (9.25")

