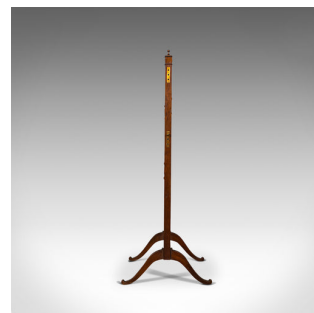
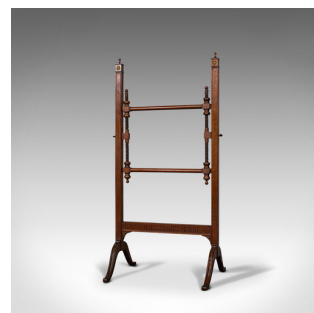
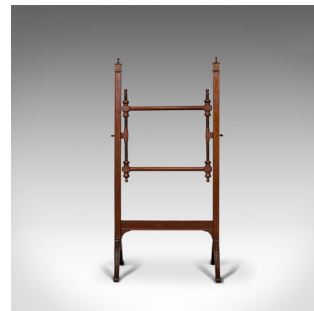


Antique Needlepoint Stretcher, English, Mahogany, Tapestry Frame, Victorian



DESCRIPTION

Our Stock # 18.6772

This is an antique needlepoint stretcher. An English, mahogany adjustable tapestry frame, dating to the late Victorian period, circa 1900.

- Adjustable frame ideal for seated or standing use
- Displaying a desirable aged patina
- Select mahogany shows fine grain interest
- Rich russet hues show beneath the wax polish finish
- Up-stands topped with small finials, over gilt foliate medallions
- Tapestry frame with adjustment along the vertical plane
- The frame rotating to standing or seated positions
- Lower stretcher rail with Greek relief pattern
- Raised upon two pairs of slipper feet with carved leaf detail to the knee

This is a fascinating antique needlepoint stretcher, offering decorative and crafting appeal for those of a traditional, creative taste. Delivered waxed, polished and ready for to be enjoyed.

Search [London Fine for #18.6772](#), or scan the QR code for more photos and details

DIMENSIONS

Max Width: 69cm (27.25")
Max Depth: 51cm (20")
Max Height: 131.5cm (51.75")
Bar Width: 44cm (17.25")
Adjustment: 40cm (15.75")

