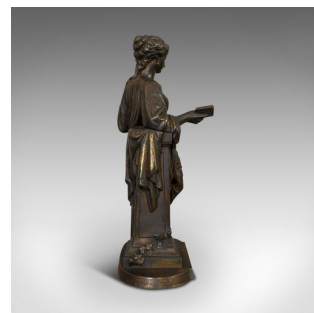
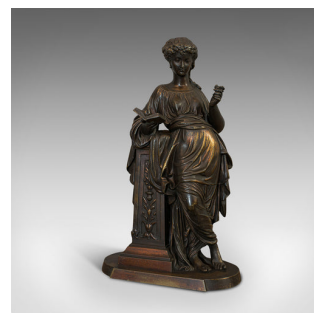
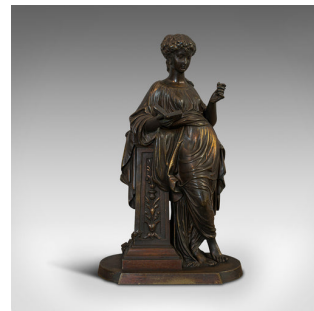


## Antique Bronze Figure, French, Female, Art Nouveau, After Moreau, Circa 1920



### DESCRIPTION

Our Stock # 18.7007

This is an antique bronze figure. A French, female statue of Art Nouveau taste in the manner of Hippolyte François Moreau, dating to the early 20th century, circa 1920.

- Sculpture of relaxed elegance
- Displays a desirable aged patina
- Bronze weathered with hints of appealing golden tones
- The pose an interpretation of the classical Aphrodite
- Classical, forlorn look is both wistful and intriguing
- The long, flowing gown redolent of Roman dress
- Holding a book with an engraved flower, the left hand carrying a small bouquet
- Resting against a decorative column with foliate motif
- Raised upon a plinth base with tapered edge
- Signed to the left of the pillar 'H. Moreau'
  - In the manner of Hippolyte Moreau, and brother Mathurin, fellow 19th century sculptor

Search [London Fine for #18.7007](#), or scan the QR code for more photos and details

### DIMENSIONS

Max Width: 20cm (7.75")

Max Depth: 14.5cm (5.75")

Max Height: 33.5cm (13.25")

### LIST PRICE

£2,650.00

